

Advanced Asset Monitoring

Many businesses are asset intensive and rely on a high number of assets to stay operational, so being able to locate assets quickly and efficiently can be essential to ensure the business runs smoothly.

Our Advanced Asset Monitoring is a real-time tracking platform that utilises artificial intelligence, robotics, and sensors to show you exactly where your assets, equipment or goods are at all times.

The electronic tagging devices contain sensors that allow seamless tracking of both indoor and outdoor locations, as well as environmental conditions to enable you to quickly locate your assets, analyse their flow and usage.

Whatever your asset is, we have a tagging device that will give you the accurate and reliable information you need.

Find, monitor and manage your assets, anytime, anywhere

Using a range of connectivity types such as 5G and Bluetooth, our advanced asset monitoring devices have the ability to track assets both indoors and outdoors as well as environmental conditions such as:



Temperature



Humidity



Vibration/shock



Light/UI

Know the location, condition and status of your assets quickly and easily. What's more, we can create specific sensors for your product needs if necessary.

With a range of tagging devices available, whatever your business is, we have a device to suit your individual requirements and to provide you with the accurate and reliable information you need to run your business smoothly.

Dashboard

Integrate all your assets and stay continuously informed on where they are with our easy to use dashboard. Data is sent to the dashboard via the cloud, providing you with a complete overview of where your assets are at all times.

Data analytics are accessible via the dashboard, allowing you to effectively make informed decisions.

Benefits



Improved workflow

Our integrated platform will provide a comprehensive view of your business' assets to help maintain business continuity.



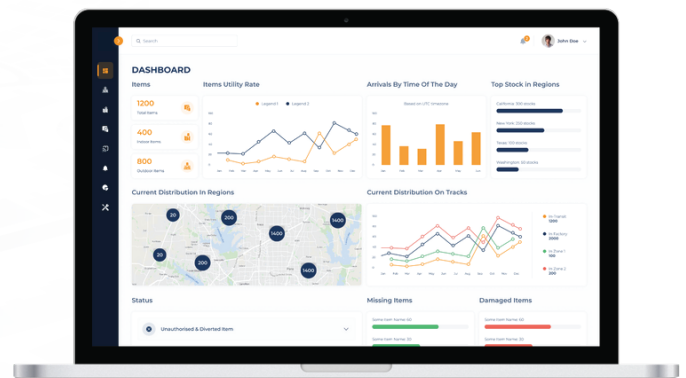
Cost savings

Reducing unnecessary purchases of extra inventory from lost/stolen assets and reducing waste from spoiled assets by monitoring their environmental conditions.



Improved business processes

Our advanced technology will give you the power to provide an early warning of issues, see supply chain efficiencies quickly, and conduct contingency planning using reliable and relevant information.



To find out how we can support you please contact us on:

t. 0333 010 2000

w. [marlowefireandsecurity.com](https://www.marlowefireandsecurity.com)

e. hello@marlowefireandsecurity.com

Features



Device

- Outdoor tracker
 - Condition monitor
 - BL bridge
 - Indoor & outdoor
 - Battery powered (with 1 year battery life)
-
- BL-Bridge
 - Indoor & outdoor
 - Mains powered
-
- BL-Bridge
 - Condition monitor
 - Indoor & outdoor
 - Mains powered
 - Backup battery (weeks of battery life)
-
- Beacon tracker
 - Condition monitor
 - Indoor & outdoor
 - Battery powered (with 1 year battery life)
-
- Outdoor tracker
 - Condition monitor
 - Data logger
 - Battery powered (with 1 year battery life)



Connectivity

- Bluetooth
 - LoRaWAN
 - 2G/5G
-
- Bluetooth
 - LoRaWAN
-
- Bluetooth
 - LoRaWAN
 - 2G/5G
-
- Bluetooth
-
- 2G



Sensors

- Temperature
 - Humidity
 - Vibration/shock
 - Light/UI*
 - GPS
-
- Temperature
 - Humidity
-
- Temperature
 - Humidity
 - Vibration/shock
 - Light/UI*
 - GPS
-
- Temperature
 - Humidity
 - Vibration/shock
-
- Temperature
 - Humidity
 - Vibration/shock
 - GPS



To find out how we can support you please contact us on:

t. 0333 010 2000

w. marlowefireandsecurity.com

e. hello@marlowefireandsecurity.com

MARLOWE

FIRE & SECURITY