

Security and Surveillance Solutions Like No Other

We offer a comprehensive line of security and video surveillance solutions which include IP cameras that support up to 8K resolution, a video management system, video and audio analytics, multi-sensor technology and device integration with a host of 3rd party application providers.

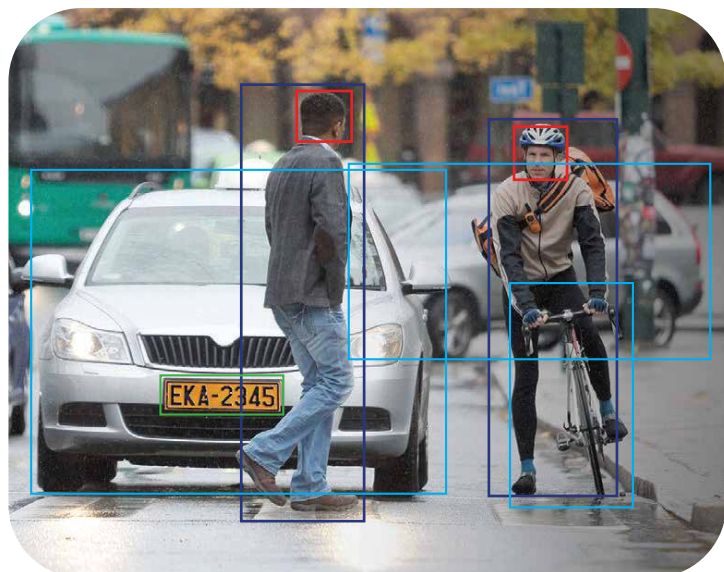
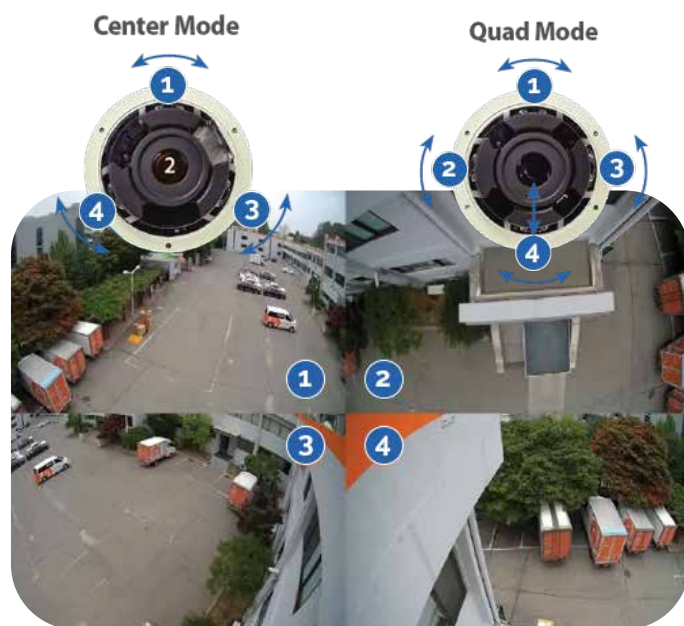
Our intelligent surveillance solutions are used nationwide, securing people, property and data across a range of industries including retail, transportation, education, banking, healthcare, hospitality, airports and more.

Never miss a thing

Our multi-sensor/ multi-directional and multi-sensor/ panoramic cameras allow you to monitor wide-open areas without blind spots or hallways and intersections with a single device.

Cameras with replaceable lens modules allow you to customise the camera to meet your specific needs while PTRZ (Pan/Tilt/Rotate/Zoom) equipped devices can be adjusted remotely without physically accessing the unit.

All multi-sensor devices use a single network cable and IP address for quick installation and configuration and can be recorded using a single camera recording license for Wisenet WAVE VMS and most popular video management systems.



Smart target detection

Our high-resolution 4K cameras have been equipped with AI-based analytics with attribute extraction that can accurately identify both humans and vehicles. Being able to differentiate and identify objects as humans or vehicles leads to faster and more efficient forensic searches as well as a reduction in bandwidth and storage through metadata tagging.



Person



Face



Vehicle



Registration plate

To find out how we can support you please contact us on:

t. 0333 010 2000

w. marlowefireandsecurity.com

e. hello@marlowefireandsecurity.com

MARLOWE
FIRE & SECURITY

Detect and classify objects, and instantly filter based on specific attributes:

Person	Face	Vehicle	Registration plate
<ul style="list-style-type: none">• Gender• Upper/lower garment (up to 2 colours simultaneously)• Bag	<ul style="list-style-type: none">• Gender• Age• Glasses• Face mask	<ul style="list-style-type: none">• Type• Colour	<ul style="list-style-type: none">• Presence of a registration plate

Edge artificial intelligence

As AI becomes more broadly adopted across all industries, edge-based AI (which filters and processes data locally on a camera) is being increasingly incorporated into video surveillance to enable end-to-end AI technology.

Today, most security cameras send the data they collect to servers to be analysed. However, with edge-based AI, the data is analysed by the camera first and subsequently sent to the server.

This reduces the burden of transferring and storing large amounts of data to a server, thereby increasing efficiency, saving time, and reducing server costs typically required to analyse data.

- ✓ Increase event monitoring accuracy by reducing false alarms
- ✓ Classify target objects with attributes
- ✓ BestShot for minimising storage and bandwidth requirements

Intelligent video analytics

With customisable analytics zones and event-based alarms, our video analytics suite reduces the frequency of false alarms whilst increasing the efficiency of forensic review.



Face detection

Identifies key facial features and issues alerts when a face is present



Intrusion detection

Triggers an event when movement is detected in a designated virtual zone



Virtual line crossing detection

Triggers an alarm when objects are detected crossing a pre-defined virtual line or perimeter



Loitering detection

Triggers an event when an object enters and rests in a designated virtual zone



Enter/exit detection

Detection of objects entering or exiting a designated area



Appear/disappear detection

Detects the appearance or disappearance of an item in a designated virtual zone

Intelligent video surveillance for every industry, every application



Retail



Transportation



Travel



Healthcare



Banking



Education



HM Prison
Service



Energy

To find out how we can support you please contact us on:

t. 0333 010 2000

w. marlowefireandsecurity.com

e. hello@marlowefireandsecurity.com

MARLOWE
FIRE & SECURITY